

VT-TNR1646PFN

Transcendent Series NDAA Compliant 16 Channel
12.0 MegaPixel Real Time PoE Network Video Recorder



KEY FEATURES

- 16 Channel Stand-alone Real-time IP Network Video Recorder
- 12MP Recording @ 20fps per Channel, 8MP [4K] Recording @ 30fps per Channel
- 4K HDMI (x 2) & VGA Video Outputs
- H.265S / H.265+ / H.265 / H.264 Video Compression
- Gen. IV Advanced Analytics [Camera Dependent]: Regional Entrance / Exit, Line Crossing, Target Counting [All by Human / Motor Vehicle Classification] Face Detection, Object Missing, Exception
- Supports License Plate Recognition Cameras + Panoramic / Peri-Cams [180° and 360°] + Fisheye / 360° Camera DeWarping [Web & App]
- Plug and Play & Auto Configuration for many leading ONVIF compliant IP Camera models
- Internal 16-Port PoE Switch
- 2 Gigabit LAN Ports
- Pentaplex: Live Display / Record / Playback / Backup / Remote Access
- 4 Internal SATA2 / SATA3 HDD Slot supporting up to 48TB Total (4 x 12TB)
- Network Based PTZ Control
- Applications for iOS® & Android®
- Remote Viewing via Web Browser
- Free VMS (Video Management Software) Lite and Standard versions available for organized viewing of multiple sites [For Enterprise version please contact your Vitek Reseller]
- Supports both Dynamic and Static IP Addresses
- Web-based remote configuration
- Control locally via USB Mouse or with the Included IR Remote control
- 3 Year Warranty



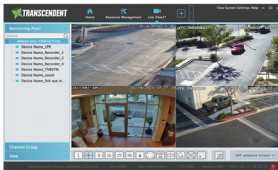
Included Accessories: Remote Control, Heavy Duty Rack Ears [for mounting], SATA Cables, Power Cord, Mouse, and Hardware



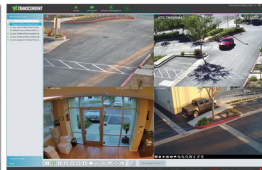
VITEK Transcendent Series 12MP NVR!

Transcendent Series Network Video Solutions supporting Gen. IV Advanced Analytics combine the simplicity of Stand-Alone, Plug-and-Play Recorders and surveillance cameras with versatile designs and Advanced A.I. features, plus License Plate Recognition and 360° and "Peri" Camera De-Warping [Web & App]. Available in 8, 32, 64 & 128 channel configurations, these simple to use and easy-to-install NVRs support HD IP security cameras up to 12 MegaPixel. A perfect pairing with Transcendent Gen. IV Advanced Analytic Cameras for quick, professional installation offering a variety of viewing options such as VMS and Web Browser along with simple yet intuitive IOS and Android apps. Both the Transcendent HD-over-Coax and NVRs share the same client, VMS viewing platform and Mobile apps.

VITEK TRANSCENDENT VMS



Local Management, Viewing Interface & Remote Viewing with Web Browsers

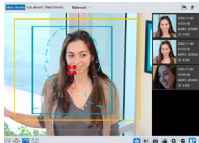


Remote Viewing Using Mac OSX



Apps Available for iPhone, iPad, & Android Devices

FACE DETECTION, LPR, 360° DE-WARPING & MORE!



FACIAL DETECTION

Security personnel can easily find out who entered / left the restricted area and at what time



LICENSE PLATE RECOGNITION

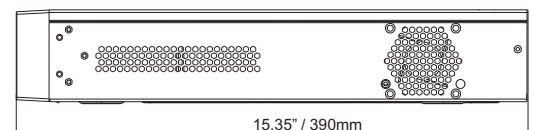
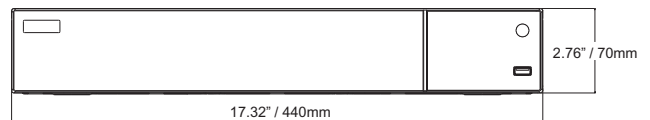
Supports 10,000 Plate Database, 0-75mph (120kmph) Capture Speed (Installation Dependent)



360° / FISHEYE CAMERA DEWARPING [WEB & APP]

Multiple Views include 360° Overview, Quad View, Overview + 3 Views, and Single View
*Also Supports Peri / Pano Cameras

DIMENSIONS



Rear Connections

An Eye On Innovation

www.vitekcctv.com



DETAILED SPECIFICATIONS



Video Input / Resolution	16 IP Channels up to 12 MegaPixel
Main Monitor Output (HDMI1, HDMI 2, VGA)	HDMI × 1 : 3840 × 2160 / 1920 × 1080 / 1280 × 1024, HDMI 2 & VGA × 1: 1920 × 1080 / 1280 × 1024 [*HDMI and VGA output the same Video Source]
Multi-Screen Display	Main Output: 1/4/6/8/9/13/16 (Live View), AUX output: 1/4/6/8/9 (live view) [Max. 16+9CH local live view]
Multi Operation	Pentaplex: Live Display / Record / Playback / Backup / Remote Access
Recording Compression	H.265S / H.265+ / H.265 / H.264
OS	Embedded Linux
Recording Resolution	240fps @ 12MP (20fps/ch), 480fps @ 8MP [4K] or less (30fps/ch)
Audio over IP Inputs	16 (Camera Dependent)
2-Way Audio, Local Audio In/Out	YES, IN: RCA × 1Ch. / OUT: RCA × 1Ch. G.711 (U/A Compression)
Encode	CBR / VBR
Recording Modes	Manual / Timer / Motion / Sensor / Alarm / AI
File Management	Reserving time, Redundancy, Dual Stream Recording
Local Playback	16Ch.
Gen. IV Advanced Analytics [Camera Dependent]	Regional Entrance/Exit, Line Crossing, Target Counting [All by Human/Motor Vehicle Classification] Face Detection [FD], Object Abandoned/Missing, Video Blur, Color Cast, Abnormal Video + License Plate Recognition & Fisheye Dewarping [WEB & APP]
Face Detection	16Ch., 32 Libraries (10,000 Face pics), 18 pics/sec Computing, Search by Pic, Add/Modify/Delete/Search Pics, Add pics w/ App, Web, Ext. Import, Supports Allow/Block Lists and Stranger Match Alarm, Track Display on Map, Bar Graph Stats by Time Period
License Plate Recognition	Supports Overview and Cut-Out of Plate, 10,000 Plate Database, 0-75mph (120kmph) Capture Speed (Installation Dependent)
360° Camera De-Warping	Multiple Views include 360° Overview, Quad, Overview + 3 Views, and Single View [Web & App]
Search	Time Sliced Image Search, Time/Calendar Search, Event (Motion, External Alarm), Tag Search
Smart Search	Highlighted Color to Display Certain Time Periods - Colors Refer to Different Recorded Events
Alarm Modes	Sensor, Motion, Video loss, IP conflict, Disk Error, Illegal access, Network Disconnection, Smart Events
Alarm In/Output & Triggering	16 CH Local Alarm Input, Supporting IPC Alarm Input / 4 CH Output, Record / Snap / PTZ Move, Alarm Out / E-mail
Network Interface	RJ45 10 / 100 / 1000 Mbps × 2
Total Bandwidth	160Mbps/160Mbps
Dual-stream	Individual Network Video Stream and local recording stream, set separately
Network Protocols	TCP/IP, PPPoE, DHCP, DNS, DDNS, UPnP, NTP, SMTP, RTSP, HTTP, HTTPS, 802.1x, SNMP, ONVIF
Remote Viewing	VMS / Web Browser / Mobile Platforms [iOS, Android]
Backup	Network, U Disk, USB Mobile HDD
SATA HDD	SATA × 4 (Max 12TB per HDD = 48TB total), e-SATA × 1
USB	USB 3.0 × 1, USB × 2.0 × 2
RS485	RS485 (Full-Duplex), Connect to PTZ
PTZ Protocol, Support	Through Network or RS485 (Pelco D / Pelco P), PTZ Preset and Auto Cruise, up to 255 Presets and 8 Cruises
Power Consumption / Supply	≤ 20W (Without HDD) / AC 110/220V (ATX 300W)
Working Environment	14°F~122°F (-10°~50°C) / 10~90% RH
Dimensions (WxDxH)	17.32 × 15.35 × 2.76" (440 x 390 x 70mm)
Weight	Net: 9.59lb (4.35kg), Gross: 12.46lb (5.65kg)